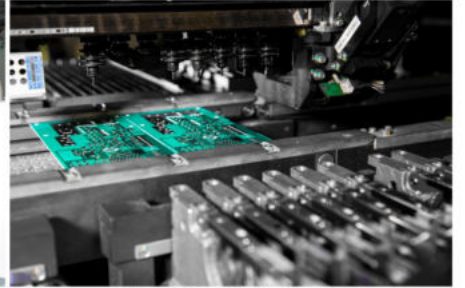


Innotech Solutions

Technological Market Products SL





CONTENTS

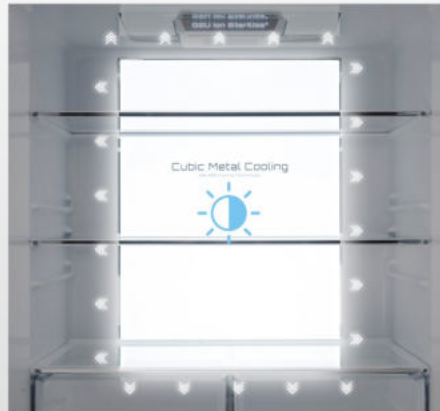
			
07-11	12-15	16-18	19-26
Multi-door	Triple door	Double-door -No frost	Double-door -Defrost

			
27-32	33-36	37-40	41-50
Single-door	Wine Cooler	Beverage Cooler	Retro Collection

Thoughtful Engineering

❄ Superior LED Components

No direct light, more comfortable operating environment.



❄ Metal Cooling Shower

By metal cooling shower, temperature of the refrigeration room is more balanced.



❄ Sterilization and Freshness Function



❄ Multi Air Flow System

Multi Air Flow System provides even cold air distribution at each corner so that food reaches the ideal temperature quickly.



* Triple Zone

Foods can be in order to store in 3 separated temperature zones.



* Fast Freezing

Fast freezing for the long-lasting freshness.



* Humidity control

It stores your vegetables and fruits at an optimal humidity level by releasing moisture cyclically.



* Twin cooling system

It can prevent any odor from transferring and stop the food from drying out.



Enrich Your Life



No Frost

Cubic Metal Cooling

GALANZ Cooling Technology



Multi-door



World famous
Compressor



High density
insulate foam



Chargeable and
easy-cleaning
gasket



Replaceable and
adjustable feet



Super freezing



Low noise design



Environment-friendly
technology



100% HFC Free
& PFC-W Free



Fast cooking



Keep fresh



Broadmeter design
(N-S)



Different color
optional



No Frost Cross-door

BCD-470WTEPH



Optional Color



Features

- Electronic Temperature Control with Touch Button
- Humidity Control
- Twin Cooling System
- Intelligent Household Alarm System
- Sterilization Refresh Function
- Fast Freezing
- Fast Cooling
- Adjustable Leg
- Child Lock
- Metal Cooling Shower
- Adjustable Balconies
- Crystal Balcony
- AL Stamping
- Climate Type: SN/N/ST/T
- Energy Class: A+
- Inverter Type
- No Frost

Specifications

- Total Capacity (L): 448
- Refrigerate Capacity (L): 312
- Variable Temperature Room Capacity (L): 68
- Freezer Capacity (L): 68

Dimensions

- Unit Size(W*D*H): 825*673*1903
- Package Size(W*D*H): 882*729*2005
- Loading(40HQ): 39

No Frost Cross-door

BCD-472WTE



Optional Color



Features

- Electronic Temperature Control with Touch Button
- Twin Cooling System
- Intelligent Household Alarm System
- Fast Freezing
- Fast Cooling
- Smart Mode
- Holiday Mode
- Climate Type: SN/N/ST/T
- Energy Class: A+

Specifications

- Total Capacity (L): 448
- Refrigerate Capacity (L): 312
- Freezer Capacity (L): 136

Dimensions

- Unit Size(W*D*H): 825*673*1903
- Package Size(W*D*H): 882*729*2005
- Loading(40HQ): 39

No Frost Cross-door

BCD-500WTE



Optional Color



Features

- Electronic Temperature Control
- Smart Mode
- Fast Freezing
- Holiday Mode
- Adjustable Leg
- Crystal Balcony
- Climate Type: SN/N/ST/T
- Energy Class: A+
- No Frost

Specifications

- Total Capacity (L): 485
- Refrigerate Capacity (L): 335
- Freezer Capacity (L): 150

Dimensions

- Unit Size(W*D*H): 825*673*1903
- Package Size(W*D*H): 882*729*2005mm
- Loading(40HQ): 39

No Frost French-door

BCD-390WTEPH



Optional Color



Features

- Electronic Temperature Control with Touch Button
- Humidity Control
- Twin Cooling System
- Intelligent Household Alarm System
- Sterilization Refresh Function
- Fast Freezing
- Fast Cooling
- Holiday Mode
- Adjustable Leg
- Child Lock
- Metal Cooling Shower
- Adjustable Balconies
- Crystal Balcony
- AL Stamping
- Inverter Type
- Climate Type: SN/N/ST/T
- Energy Class: A+
- No Frost

Specifications

- Total Capacity (L): 354
- Refrigerate Capacity (L): 226
- Variable Temperature Room Capacity (L): 20
- Freezer Capacity (L): 108

Dimensions

- Unit Size(W*D*H): 725*673*1903
- Package Size(W*D*H): 782*729*2005
- Loading(40HQ): 47

No Frost French-door

BCD-390WTEP



Optional Color



Features

- Electronic Temperature Control with Touch Button
- Humidity Control
- Twin Cooling System
- Intelligent Household Alarm System
- Smart Mode
- Fast Freezing
- Fast Cooling
- Holiday Mode
- Child Lock
- Adjustable Balconies
- Crystal Balcony
- Inverter Type
- Metal Cooling Shower
- Climate Type: SN/N/ST/T
- Energy Class: A+
- No Frost

Specifications

- Total Capacity (L): 354
- Refrigerate Capacity (L): 226
- Variable Temperature Room Capacity (L): 20
- Freezer Capacity (L): 108

Dimensions

- Unit Size(W*D*H): 725*673*1903
- Package Size(W*D*H): 782*729*2005
- Loading(40HQ): 47

No Frost French-door

BCD-415WTEP



Optional Color



Features

- Electronic Temperature Control with Touch Button
- Smart Mode
- Fast Freezing
- Fast Cooling
- Holiday Mode
- Adjustable Leg
- Adjustable Balconies
- Crystal Balcony
- Inverter Type
- Metal Cooling Shower
- Climate Type: SN/N/ST/T
- Energy Class: A+
- No Frost

Specifications

- Total Capacity (L): 381
- Refrigerate Capacity (L): 273
- Freezer Capacity (L): 108

Dimensions

- Unit Size(W*D*H): 725*673*1903
- Package Size(W*D*H): 782*729*2005
- Loading(40HQ): 47

No Frost Triple door

BCD-350W



Optional Color



Features

- Electronic Temperature Control
- Smart Mode
- Fast Freezing
- Holiday Mode
- Adjustable Leg
- Crystal Balcony
- Crystal Vegetable Crisper with Glass Cover
- Climate type: SN/N/ST/T
- Energy Class: A+
- No Frost

Specifications

- Total Capacity (L): 318
- Refrigerate Capacity (L): 222
- Freezer Capacity (L): 96

Dimensions

- Unit Size(W*D*H): 595*713*1893
- Package Size(W*D*H): 655*733*1977
- Loading(40HQ): 69

BCD-256W



Optional Color



Features

- Electronic Temperature Control
- Smart Mode
- Fast Freezing
- Holiday Mode
- Adjustable Leg
- Crystal Door Balcony
- Crystal Vegetable Crisper with Glass Cover
- Climate type: SN/N/ST
- Energy Class: A/A+
- No Frost

Specifications

- Total Capacity (L): 247
- Refrigerate Capacity (L): 155
- Variable Temperature Room Capacity (L): 30
- Freezer Capacity (L): 62

Dimensions

- Unit Size(W*D*H): 554*645*1830
- Package Size(W*D*H): 619*747*1957
- Loading(40HQ): 72

Double-door-No frost



World famous Compressor



High density invisible foam



Changeable and easy-clearing gasket



Flat back and adjustable feet



Reversible door



Low noise design



Environment-friendly technology



Mechanical temp. Control with adjustable thermostat



100% HFC Free & PFCW Free



Fast cooling



Keep fresh



Board-like design (N-ST)



Different color optional



Super freezing

No Frost Top Freezer

BCD-340W



Optional Color



Features

- Electronic Temperature Control
- Adjustable Leg
- Reversible Door
- Crystal Vegetable Crisper with Glass Cover
- Climate type: ST
- Energy Class: A
- No Frost

Specifications

- Total Capacity (L): 340
- Refrigerate Capacity (L): 265
- Freezer Capacity (L): 75

Dimensions

- Unit Size(W*D*H): 599*703*1647
- Package Size(W*D*H): 663*760*1730
- Loading(40HQ): 73

No Frost Bottom Freezer

BCD-238W



Optional Color



Features

- Mechanical Temperature Control
- Adjustable Leg
- Crystal Balcony
- Crystal Vegetable Crisper with Glass Cover
- Freezer Drawer
- Climate type: SN/N/ST/T
- Energy Class: A/A+/A++
- No Frost

Specifications

- Total Capacity (L): 209
- Refrigerate Capacity (L): 143
- Freezer Capacity (L): 66

Dimensions

- Unit Size(W*D*H): 556*607*1729
- Package Size(W*D*H): 624*707*1779
- Loading(40HQ): 76

BCD-280W



Optional Color



Features

- Electronic Temperature Control
- Adjustable Leg
- Reversible Door
- Crystal Vegetable Crisper with Glass Cover
- Climate type: ST
- Energy Class: A
- No Frost

Specifications

- Total Capacity (L): 283
- Refrigerate Capacity (L): 213
- Freezer Capacity (L): 70

Dimensions

- Unit Size(W*D*H): 599*653*1517
- Package Size(W*D*H): 663*710*1600
- Loading(40HQ): 79

Enrich Your Life



Defrost



Double-door-Defrost



World famous Compressor



High density insulate foam



Chargeable and easy-cleaning gasket



Fit back and adjustable feet



Reversible door



Different color optional



Low noise design



Environment-friendly technology



Mechanical temp. Control with adjustable thermostat



100% HFC Free & PFC Free



Fast cooling



Super freezing



Keep fresh



Board climate design (N-ST)

Defrost Top Freezer

BCD-295



Optional Color



Features

- Mechanical Temperature Control
- Adjustable Leg
- Reversible Door
- Crystal Balcony
- Crystal Vegetable Crisper with Glass Cover
- Climate type: SN/N/ST/T
- Energy Class: A+/A++

Specifications

- Total Capacity (L): 295
- Refrigerate Capacity (L): 224
- Freezer Capacity (L): 71

Dimensions

- Unit Size(W*D*H): 599*578*1750
- Package Size(W*D*H): 679*640*1845
- Loading(40'HQ): 73

BCD-215V



Optional Color



Features

- Mechanical Temperature Control
- Adjustable Leg
- Reversible Door
- Crystal Balcony
- Crystal Vegetable Crisper with Glass Cover
- Climate type: SN/N/ST/T
- Energy Class: A/A+/A++

Specifications

- Total Capacity (L): 215
- Refrigerate Capacity (L): 170
- Freezer Capacity (L): 45

Dimensions

- Unit Size(W*D*H): 549*568*1412
- Package Size(W*D*H): 580*595*1450
- Loading(40'HQ): 135

Defrost Top Freezer

BCD-153V



Optional Color



Features

- Mechanical Temperature Control
- Adjustable Leg
- Reversible Door
- Crystal Vegetable Crisper with Glass Cover
- Climate type: SN/N/ST
- Energy Class: A
- American Style Door for Option

Specifications

- Total Capacity (L): 149
- Refrigerate Capacity (L): 92
- Freezer Capacity (L): 57

Dimensions

- Unit Size(W*D*H): 486*549*1381
- Package Size(W*D*H): 515*575*1415
- Loading(40HQ): 158

Defrost Top Freezer

BCD-113V



Optional Color



Features

- Mechanical Temperature Control
- Adjustable Leg
- Reversible Door
- Crystal Vegetable Crisper with Glass Cover
- Climate type: SN/N/ST
- Energy Class: A+
- European Style Door for Option

Specifications

- Total Capacity (L): 106
- Refrigerate Capacity (L): 71
- Freezer Capacity (L): 35

Dimensions

- Unit Size(W*D*H): 486*549*1086
- Package Size(W*D*H): 515*575*1120
- Loading(40HQ): 184

BCD-133V



Optional Color



Features

- Mechanical Temperature Control
- Adjustable Leg
- Reversible Door
- Crystal Vegetable Crisper with Glass Cover
- Climate type: N/ST
- Energy Class: A/A+
- American Style Door for Option

Specifications

- Total Capacity (L): 129
- Refrigerate Capacity (L): 92
- Freezer Capacity (L): 37

Dimensions

- Unit Size(W*D*H): 486*549*1221
- Package Size(W*D*H): 515*575*1255
- Loading(40HQ): 184

BCD-88V



Optional Color



Features

- Mechanical Temperature Control
- Adjustable Leg
- Reversible Door
- Crystal Balcony
- Crystal Vegetable Crisper with Glass Cover
- American Style Door for Option
- Climate type: N/ST
- Energy Class: A/A+
- European Style Door for Option

Specifications

- Total Capacity (L): 86
- Refrigerate Capacity (L): 60
- Freezer Capacity (L): 26

Dimensions

- Unit Size(W*D*H): 486*536*833
- Package Size(W*D*H): 515*575*870
- Loading(40HQ): 275

Defrost Bottom Freezer

BCD-310C



Optional Color



Features

- Mechanical Temperature Control
- Adjustable Leg
- Reversible Door
- Crystal Balcony
- Crystal Vegetable Crisper with Glass Cover
- Freezer Drawer
- Climate type: SN/N/ST/T
- Energy Class: A+/A++

Specifications

- Total Capacity (L): 300
- Refrigerate Capacity (L): 216
- Freezer Capacity (L): 84

Dimensions

- Unit Size(W*D*H): 599*578*1850
- Package Size(W*D*H): 679*640*1948
- Loading(40HQ): 72

BCD-210N



Optional Color



Features

- Mechanical Temperature Control
- Adjustable Leg
- Crystal Balcony
- Crystal Vegetable Crisper with Glass Cover
- Freezer Drawer
- Climate type: ST
- Energy Class: A

Specifications

- Total Capacity (L): 210
- Refrigerate Capacity (L): 130
- Freezer Capacity (L): 80

Dimensions

- Unit Size(W*D*H): 527*602*1607
- Package Size(W*D*H): 575*630*1677
- Loading(40HQ): 104

Defrost Bottom Freezer

BCD-190N



Optional Color



Features

- Mechanical Temperature Control
- Adjustable Leg
- Crystal Balcony
- Crystal Vegetable Crisper with Glass Cover
- Freezer Drawer
- Climate type: SN/N/ST
- Energy Class: A+

Specifications

- Total Capacity (L): 190
- Refrigerate Capacity (L): 110
- Freezer Capacity (L): 80

Dimensions

- Unit Size(W*D*H): 527*602*1501
- Package Size(W*D*H): 599*642*1561
- Loading(40HQ): 104

BCD-180N



Optional Color



Features

- Mechanical Temperature Control
- Adjustable Leg
- Crystal Balcony
- Crystal Vegetable Crisper with Glass Cover
- Freezer Drawer
- Climate Type: SN/N/ST/T
- Energy Class: A+/A++/A+++

Specifications

- Total Capacity (L): 178
- Refrigerate Capacity (L): 113
- Freezer Capacity (L): 65

Dimensions

- Unit Size(W*D*H): 527*602*1423
- Package Size(W*D*H): 575*630*1479
- Loading(40HQ): 128

Single-door



World famous Compressor



High density insulate foam



Chargeable and easy-cleaning gasket



Flat back and adjustable feet



Reversible door



Keep fresh



Low noise design



Environment-friendly technology



Mechanical temp. Control with adjustable thermostat



100% HFC Free & PFC Free



Fast cooling



Super freezing



Board-chimney design (N-ST)



Different color optional



Defrost Upright

BC-235R



Features

- Mechanical Temperature Control
- Adjustable Leg
- Reversible Door
- Crystal Balcony
- Crystal Vegetable Crisper with Glass Cover
- Climate Type: SN/N/ST
- Energy Class: A+

Specifications

- Total Capacity (L): 235
- Refrigerate Capacity (L): 235

Dimensions

- Unit Size(W*D*H): 551*570*1412
- Package Size(W*D*H): 580*595*1450
- Loading(40'HQ): 135

Optional Color



BC-205R



Features

- Mechanical Temperature Control
- Adjustable Leg
- Reversible Door
- Crystal Balcony
- Crystal Vegetable Crisper with Glass Cover
- Climate Type: SN/N/ST
- Energy Class: A+

Specifications

- Total Capacity (L): 200
- Refrigerate Capacity (L): 200

Dimensions

- Unit Size(W*D*H): 551*570*1230
- Package Size(W*D*H): 580*598*1290
- Loading(40'HQ): 157

Optional Color



Defrost Table-top

BC-127



Optional Color



Features

- Mechanical Temperature Control
- Adjustable Leg
- Reversible Door
- Crystal Vegetable Crisper with Glass Cover
- Climate Type: SN/N/ST
- Energy Class: A+

Specifications

- Total Capacity (L): 117
- Refrigerate Capacity (L): 103
- Freezer Capacity (L): 14

Dimensions

- Unit Size(W*D*H): 506*559*836
- Package Size(W*D*H): 535*608*870
- Loading(40*HQ): 244

BC-127R



Optional Color



Features

- Mechanical Temperature Control
- Adjustable Leg
- Reversible Door
- Crystal Vegetable Crisper with Glass Cover
- Climate Type: SN/N/ST
- Energy Class: A+

Specifications

- Total Capacity (L): 127
- Refrigerate Capacity(L): 127

Dimensions

- Unit Size(W*D*H): 506*559*836
- Package Size(W*D*H): 535*608*870
- Loading(40*HQ): 244

Defrost Table-top

BC-125R



Optional Color



Features

- Mechanical Temperature Control
- Side by Side Match with Model BD-95
- Adjustable Leg
- Reversible Door
- Crystal Balcony
- Crystal Vegetable Crisper with Glass Cover
- Climate Type: SN/N/ST
- Energy Class: A/A+/A++

Specifications

- Total Capacity (L): 121
- Refrigerate Capacity(L): 121

Dimensions

- Unit Size(W*D*H): 551*562*842
- Package Size(W*D*H): 580*598*865
- Loading(40*HQ): 236

BC-115L



Optional Color



Features

- Mechanical Temperature Control
- Side by Side Match with Model BD-95
- Adjustable Leg
- Reversible Door
- Crystal Balcony
- Crystal Vegetable Crisper with Glass Cover
- Climate Type: N/ST
- Energy Class: A+/A++/A+++

Specifications

- Total Capacity (L): 111
- Refrigerate Capacity (L): 92
- Freezer Capacity (L): 18

Dimensions

- Unit Size(W*D*H): 551*562*842
- Package Size(W*D*H): 580*598*865
- Loading(40*HQ): 236

BD-95



Optional Color



Features

- Mechanical Temperature Control
- Side by Side Match with Model BC-115/BC-125R
- Adjustable Leg
- Reversible Door
- Freezer Drawer
- Climate Type: SN/N/ST
- Energy Class: A+/A++/A+++

Specifications

- Total Capacity(L): 85
- Freezer Capacity (L): 85

Dimensions

- Unit Size(W*D*H): 551*562*842
- Package Size(W*D*H): 580*598*865
- Loading(40*HQ): 236

Defrost Table-top

BC-103



Optional Color



Features

- Mechanical Temperature Control
- Adjustable Leg
- Reversible Door
- Crystal Vegetable Crisper with Glass Cover
- Climate Type: SN/N/ST
- Energy Class: A/A+/A++

Specifications

- Total Capacity (L): 97
- Refrigerate Capacity (L): 85
- Freezer Capacity (L): 12

Dimensions

- Unit Size(W*D*H): 486*536*833
- Package Size(W*D*H): 515*575*870
- Loading(40*HQ): 275

BC-103R



Optional Color



Features

- Mechanical Temperature Control
- Adjustable Leg
- Reversible Door
- Crystal Vegetable Crisper with Glass Cover
- Climate Type: SN/N/ST/T
- Energy Class: A+/A++/A+++

Specifications

- Total Capacity (L): 98
- Refrigerate Capacity(L): 98

Dimensions

- Unit Size(W*D*H): 486*536*833
- Package Size(W*D*H): 515*575*870
- Loading(40*HQ): 275

BD-80



Optional Color



Features

- Mechanical Temperature Control
- Side by side match with model BC-103/103R
- Adjustable Leg
- Reversible Door
- Climate Type: SN/N/ST
- Energy Class: A/A+

Specifications

- Total Capacity(L): 71
- Freezer Capacity (L): 71

Dimensions

- Unit Size(W*D*H): 486*536*833
- Package Size(W*D*H): 515*575*870
- Loading(40*HQ): 275

Defrost Mini Bar

BC-75



Optional Color



Features

- Mechanical Temperature Control
- Adjustable Leg
- Reversible Door
- Separate Chilling R room
- Climate Type: SN/N/ST/T
- Energy Class: A/A+

Specifications

- Total Capacity (L): 72
- Refrigerate Capacity (L): 65
- Chilling Capacity (L): 7

Dimensions

- Unit Size(W*D*H): 486*500*627
- Package Size(W*D*H): 515*550*655
- Loading(40*HQ): 367

BC-47



Optional Color



Features

- Mechanical Temperature Control
- Separate chilling room
- Side by side match with model BD-35
- Adjustable Leg
- Reversible Door
- Climate Type: SN/N/ST
- Energy Class: A/A+/A++

Specifications

- Total Capacity (L): 45
- Refrigerate Capacity (L): 40
- Chilling Capacity (L): 5

Dimensions

- Unit Size(W*D*H): 444*485*495
- Package Size(W*D*H): 455*515*533
- Loading(40*HQ): 575

BD-35



Optional Color



Features

- Mechanical Temperature Control
- Side by side match with model BC-47
- Adjustable Leg
- Reversible Door
- Climate Type: SN/N/ST/T
- Energy Class: A/A+/A++

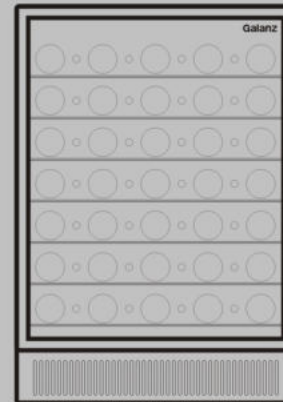
Specifications

- Total Capacity(L): 30
- Freezer Capacity (L): 30

Dimensions

- Unit Size(W*D*H): 444*485*495
- Package Size(W*D*H): 455*515*533
- Loading(40*HQ): 575

Enrich Your Life



WINE CABINET

JC-163EZ



Features

- Mechanical/Electronic temperature Control
- Black Plastic/Stainless Steel Door Frame + Glass Door
- Recessed Handle
- Wire Shelves /Wooden Shelves
- Climate Type: SN/N

Specifications

- Bottles of wine: 52/47
- Total Capacity (L): 157.5

Dimensions

- Unit Size(W*D*H): 595*632*873
- Package Size(W*D*H): 650*685*937
- Loading(40'HQ): 151

JC-133



Features

- Mechanical/Electronic temperature Control
- Black Plastic/Stainless Steel Door Frame + Glass Door
- Recessed Handle
- Wire Shelves /Wooden Shelves
- Climate Type: SN/N

Specifications

- Bottles of wine: 40
- Total Capacity (L): 125

Dimensions

- Unit Size(W*D*H): 545*505*852
- Package Size(W*D*H): 595*560*910
- Loading(40'HQ): 206

WINE CABINET

JC-103



Features

- Mechanical/Electronic temperature Control
- Black Plastic/Stainless Steel Door Frame + Glass Door
- Recessed Handle
- Wire Shelves /Wooden Shelves
- Climate Type: SN/N

Specifications

- Bottles of wine: 31
- Total Capacity (L): 104

Dimensions

- Unit Size(W*D*H): 480*475*852
- Package Size(W*D*H): 534*554*973.5
- Loading(40'HQ): 224

JC-75



Features

- Mechanical Temperature Control
- Black Plastic/Stainless Steel Door Frame + Glass Door
- Recessed Handle
- Wire Shelves /Wooden Shelves
- Climate Type: SN/N

Specifications

- Bottles of wine: 21
- Total Capacity (L): 73

Dimensions

- Unit Size(W*D*H): 480*475*627
- Package Size(W*D*H): 534*554*742
- Loading(40'HQ): 304

JC-50



Features

- Mechanical Temperature Control
- Black Plastic/Stainless Steel Door Frame + Glass Door
- Recessed Handle
- Wire Shelves /Wooden Shelves
- Climate Type: SN/N

Specifications

- Bottles of wine: 16
- Total Capacity (L): 49

Dimensions

- Unit Size(W*D*H): 480*475*468
- Package Size(W*D*H): 534*554*585
- Loading(40'HQ): 352

Enrich Your Life



Beverage Cooler

JC-163



Features

- Electronic Temperature Control
- 1 Evaporator I Fan
- LED Display
- Climate Type: SN/N

Specifications

- Bottles of Beverage: 154
- Total Capacity (L): 157.5

Dimensions

- Unit Size(W*D*H): 595*632*873
- Package Size(W*D*H): 650*685*937
- Loading(40HQ): 151

JC-133



Features

- Mechanical/Electronic temperature Control
- Black Plastic/Stainless Steel Door Frame + Glass Door
- Recessed Handle
- Wire Shelves /Wooden Shelves
- Climate Type: SN/N

Specifications

- Bottles of Beverage: 130
- Total Capacity (L): 125

Dimensions

- Unit Size(W*D*H): 545*505*852
- Package Size(W*D*H): 595*560*910
- Loading(40HQ): 206

Beverage Cooler

JC-103



Features

- Mechanical/Electronic temperature Control
- Black Plastic/Stainless Steel Door Frame + Glass Door
- Recessed Handle
- Wire Shelves /Wooden Shelves
- Climate Type: SN/N

Specifications

- Total Capacity (L): 104

Dimensions

- Unit Size(W*D*H): 480*475*852
- Package Size(W*D*H): 534*554*973.5
- Loading(40HQ): 224

JC-75



Features

- Mechanical Temperature Control
- Black Plastic/Stainless Steel Door Frame + Glass Door
- Recessed Handle
- Wire Shelves /Wooden Shelves for Option
- Climate Type: SN/N

Specifications

- Bottles of Beverage: 95
- Total Capacity (L): 73

Dimensions

- Unit Size(W*D*H): 480*475*627
- Package Size(W*D*H): 534*554*742
- Loading(40HQ): 304

JC-50



Features

- Mechanical Temperature Control
- Black Plastic/Stainless Steel Door Frame + Glass Door
- Recessed Handle
- Wire Shelves /Wooden Shelves
- Climate Type: SN/N

Specifications

- Bottles of Beverage: 45
- Total Capacity (L): 49

Dimensions

- Unit Size(W*D*H): 480*475*468
- Package Size(W*D*H): 534*554*585
- Loading(40HQ): 352

Enrich Your Life



Retro Collection

BCD-340WEVF



Features

- Electronic Temperature Control
- Adjustable Leg
- Crystal Vegetable Crisper with Glass Cover
- Climate Type: ST/T
- Energy Class: A
- No Frost

Specifications

- Total Capacity (L): 340
- Refrigerate Capacity (L): 265
- Freezer Capacity (L): 75

Dimensions

- Unit Size(W*D*H): 603*748*1700
- Package Size(W*D*H): 663*760*1780
- Loading(40HQ): 73

BCD-310C



Features

- Mechanical Temperature Control
- Fan for option
- Crystal Balcony
- Crystal Vegetable Crisper with Glass Cover
- Climate Type: SN/N/ST/T
- Energy Class: A+/A++/A+++

Specifications

- Total Capacity (L): 300
- Refrigerate Capacity (L): 216
- Freezer Capacity (L): 84

Dimensions

- Unit Size(W*D*H): 599*628*1920
- Package Size(W*D*H): 665*685*1997
- Loading(40HQ): 69

Retro Collection

BCD-295VF



Features

- Mechanical Temperature Control
- Adjustable Leg
- Crystal Balcony
- Crystal Vegetable Crisper with Glass Cover
- Climate Type: SN/N/ST/T
- Energy Class: A/A+/A++/A+++

Specifications

- Total Capacity (L): 295
- Refrigerate Capacity (L): 224
- Freezer Capacity (L): 71

Dimensions

- Unit Size(W*D*H): 599*628*1820
- Package Size(W*D*H): 665*685*1987
- Loading(40HQ): 69

BCD-280WEVF



Features

- Electronic Temperature Control
- Adjustable Leg
- Crystal Vegetable Crisper with Glass Cover
- Climate Type: ST
- Energy Class: A
- No Frost

Specifications

- Total Capacity (L): 280
- Refrigerate Capacity (L): 210
- Freezer Capacity (L): 70

Dimensions

- Unit Size(W*D*H): 603*698*1570
- Package Size(W*D*H): 663*710*1660
- Loading(40HQ): 75

Retro Collection

BCD-256WTEPF



Features

- Electronic Temperature Control
- Smart Mode
- Fast Freezing
- Holiday Mode
- Adjustable Leg
- Crystal Balcony
- Crystal Vegetable Crisper with Glass Cover
- Climate Type: SN/N/ST
- Energy Class: A+
- No Frost

Specifications

- Total Capacity (L): 247
- Refrigerate Capacity (L): 155
- Variable Temperature Room Capacity (L): 30
- Freezer Capacity (L): 62

Dimensions

- Unit Size(W*D*H): 554*683*1884
- Package Size(W*D*H): 619*747*1957
- Loading(40*HQ): 72

Retro Collection

BC-235RF



Features

- Mechanical Temperature Control
- Adjustable Leg
- Crystal Balcony
- Crystal Vegetable Crisper with Glass Cover
- Climate Type: SN/N/ST
- Energy Class: A+

Specifications

- Total Capacity (L): 235

Dimensions

- Unit Size(W*D*H): 552*621*1482
- Package Size(W*D*H): 617*691*1568
- Loading(40*HQ): 81

BCD-256WEPF



Features

- Electronic Temperature Control
- Smart Mode
- Fast Freezing
- Holiday Mode
- Adjustable Leg
- Crystal Balcony
- Crystal Vegetable Crisper with Glass Cover
- Climate Type: SN/N/ST
- Energy Class: A+
- No Frost

Specifications

- Total Capacity (L): 247
- Refrigerate Capacity (L): 155
- Variable Temperature Room Capacity (L): 30
- Freezer Capacity (L): 62

Dimensions

- Unit Size(W*D*H): 554*683*1884
- Package Size(W*D*H): 619*747*1957
- Loading(40*HQ): 72

BCD-215VF



Features

- Mechanical Temperature Control
- Adjustable Leg
- Crystal Balcony
- Crystal Vegetable Crisper with Glass Cover
- Climate Type: SN/N/ST
- Energy Class: A/A+/A++

Specifications

- Total Capacity (L): 215
- Refrigerate Capacity (L): 170
- Freezer Capacity (L): 45

Dimensions

- Unit Size(W*D*H): 552*621*1482
- Package Size(W*D*H): 617*691*1568
- Loading(40*HQ): 81

Retro Collection

BCD-180F



Features

- Mechanical Temperature Control
- Adjustable Leg
- Crystal Balcony
- Crystal Vegetable Crisper with Glass Cover
- Climate Type: SN/N/ST/T
- Energy Class: A/A+/A++/A+++

Specifications

- Total Capacity (L): 178
- Refrigerate Capacity (L): 113
- Freezer Capacity (L): 65

Dimensions

- Unit Size(W*D*H): 527*642*1480
- Package Size(W*D*H): 592*705*1542
- Loading(40'HQ): 82

BCD-133VF



Features

- Mechanical Temperature Control
- Adjustable Leg
- Crystal Balcony
- Crystal Vegetable Crisper with Glass Cover
- Climate Type: N/ST
- Energy Class: A/A+

Specifications

- Total Capacity (L): 129
- Refrigerate Capacity (L): 92
- Freezer Capacity (L): 37

Dimensions

- Unit Size(W*D*H): 487*592*1281
- Package Size(W*D*H): 552*672*1368
- Loading(40'HQ): 118

Retro Collection

BC-125RF



Features

- Mechanical Temperature Control
- Adjustable Leg
- Crystal Balcony
- Crystal Vegetable Crisper with Glass Cover
- Climate Type: SN/N/ST
- Energy Class: A/A+/A++

Specifications

- Total Capacity (L): 123

Dimensions

- Unit Size(W*D*H): 552*617*900
- Package Size(W*D*H): 617*691*988
- Loading(40'HQ): 149

BC-115LF



Features

- Mechanical Temperature Control
- Adjustable Leg
- Crystal Balcony
- Crystal Vegetable Crisper with Glass Cover
- Climate Type: N/ST
- Energy Class: A/A+/A++

Specifications

- Total Capacity (L): 110
- Refrigerate Capacity (L): 92
- Freezer Capacity (L): 18

Dimensions

- Unit Size(W*D*H): 552*617*900
- Package Size(W*D*H): 617*691*988
- Loading(40'HQ): 149

BCD-113VF



Features

- Mechanical Temperature Control
- Adjustable Leg
- Crystal Balcony
- Crystal Vegetable Crisper with Glass Cover
- Climate Type: SN/N/ST
- Energy Class: A+

Specifications

- Total Capacity (L): 109
- Refrigerate Capacity (L): 71
- Freezer Capacity (L): 35

Dimensions

- Unit Size(W*D*H): 487*592*1146
- Package Size(W*D*H): 552*672*1233
- Loading(40'HQ): 136

Retro Collection

BC-103F



Features

- Mechanical Temperature Control
- Adjustable Leg
- Crystal Balcony
- Crystal Vegetable Crisper with Glass Cover
- Climate Type: SN/N/ST
- Energy Class: A++

Specifications

- Total Capacity (L): 97

Dimensions

- Unit Size(W*D*H): 487*592*893
- Package Size(W*D*H): 552*672*980
- Loading(40HQ): 184

BD-95F



Features

- Mechanical Temperature Control
- Adjustable Leg
- Climate Type: SN/N/ST/T
- Energy Class: A/A+

Specifications

- Freezer Capacity (L): 85

Dimensions

- Unit Size(W*D*H): 552*617*900
- Package Size(W*D*H): 617*691*988
- Loading(40HQ): 149

BCD-88VF



Features

- Mechanical Temperature Control
- Adjustable Leg
- Crystal Balcony
- Crystal Vegetable Crisper with Glass Cover
- Climate Type: SN/N/ST/T
- Energy Class: A/A+/A++

Specifications

- Total Capacity (L): 86
- Refrigerate Capacity (L): 60
- Freezer Capacity (L): 26
- Defrost

Dimensions

- Unit Size(W*D*H): 487*592*893
- Package Size(W*D*H): 552*672*980
- Loading(40HQ): 184

Optional Color

