

# Innotech Solutions

Technological Market Products SL



# CONTENTS

## Washing Machine



07-11

Inverter  
Front Loading



12-15

Non-inverter  
Front Loading



16-20

Top Loading

## Tumble Dryer



25-28

Air Vented



29-31

Condenser



32-34

Heat Pump

Enrich Your Life



Washing Machine



## Thoughtful Engineering

### Steam Wash

Steam wash reduces wrinkles in clothing and makes clothes cleaner than general ways.



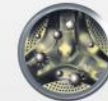
### Steam Fresh

By advanced steam fresh function, your clothes can be cared quickly and professionally.



### Self-clean Program

It's time to free yourself from cleaning up work, the washing machines can clean clothes and themselves. Advanced steam fresh function, your clothes can be cared quickly and professionally.



Before



Drum Cleaning

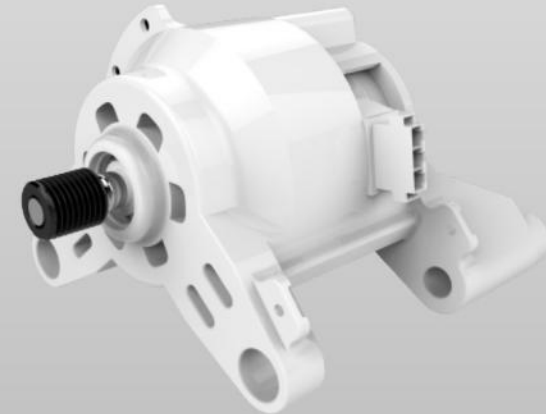


After



### BLDC Motor

Quality, stability and high efficiency.



## Big Size Door

Bigger than bigger.



## 1400RPM Spin

Dry clothes faster with 1400rpm speed.



## Noise Reduction

Structural innovation leads to more stable bodies and lower noise levels.



# Inverter Front Loading



**Energy Efficiency**  
Energy efficiency achieves European energy standard A+++



**Child Lock**  
Child lock avoids children tampering manipulating the machine. Anti-lock feet ensure shock safe and reliable.



**Intensive Wash**  
This function is perfect for very dirty clothes as the basic washing program will be extended to ensure there will be no marks even after the toughest stains.



**Hissy**  
This function is designed to wash the baby cloth, like jeans, etc.



**Mix**  
Clothing can be washed at the same time, now you do not need to wash and iron heavy clothes of the same type to wash. Energy save your time to select various loads type.



**Night Wash**  
The washing machine will not operate the spin programs, which makes the whole washing program very quiet.



**Anti-Vibration System**  
Super shock and damping device technology can effectively reduce vibration and noise.



**Anti-Ironing**  
The spin cycle with water inside the drum, which makes no mechanical damage to the fabric during the spin.



**Time Delay**  
User can make a 1 to 24 hours time delay. It makes your house work more free.



**Quick Wash**  
Using this program, user can wash 1-2kg laundry in less than 20 mins.



**Anti-Bacteria**  
This function is specially for washing underwear and baby's clothes, protecting baby's health.



**Intelligent Control with LCD/LED Display**  
Washing chooses the optimal water filling and spin speed according to the washing condition, save energy and time.



**Power-Off Memorization**  
If the power shut off, the appliance will start operating from where it stopped when the power come back.



**Drum Clean**  
In order to keep the drum clean, user can use the function to clean the drum.



**Extra Rinse**  
This feature is useful for clothes with sensitive skin, as extra rinse can remove more detergent from the washing.



**High Spin Speed**



**Steam Wash**



**Sterile**



## Inverter Front Loading

DT6



Optional Color



Capacity Range



### Features

- 15 Programs
- LED Display
- 18-Minute Fast Wash
- 1-24hr Delay Start
- Child Lock
- Power-off Memory
- Anti-foam Control
- Auto Balance System
- Overheating Control
- Water Pump

### Specifications

- Capacity of Washing(kg): 10
- Capacity of Dryer(kg): 6
- Max Spin Speed: 1400
- Energy Efficiency: B
- Programs: 15
- Wash Noise(dBA): 60
- Spin Noise(dBA): 78
- Door Opening Diameter: 33cm
- Net Weight(kg): 70
- Gross Weight(kg): 75

### Dimensions

Unit Size(H\*W\*D): 845\*595\*665  
Package Size(H\*W\*D): 890\*660\*720  
20/40/40 HD: 48/107/161

T8



Optional Color



Capacity Range



### Features

- 15 Programs
- LED Display
- Steam Wash
- 18-Minute Fast Wash
- 1-24hr Delay Start
- Child Lock
- Power-off Memory
- Anti-foam Control
- Auto Balance System
- Overheating Control
- Water Pump

### Specifications

- Capacity of Washing(kg): 9/10
- Max Spin Speed: 1400
- Energy Efficiency: A+++
- Programs: 15
- Wash Noise(dBA): 60
- Spin Noise(dBA): 78
- Door Opening Diameter: 33cm
- Net Weight(kg): 67/69
- Gross Weight(kg): 73/74

### Dimensions

Unit Size(H\*W\*D): 845/845\*595/595\*670/665  
Package Size(H\*W\*D): 890/890\*660/660\*620/720  
20/40/40 HD: 54/144/170  
48/108/161

## Inverter Front Loading

T5



Optional Color



Capacity Range



### Features

- 15 Programs
- LED Display
- 18-Minute Fast Wash
- 1-24hr Delay Start
- Child Lock
- Power-off Memory
- Anti-foam Control
- Auto Balance System
- Overheating Control
- Water Pump

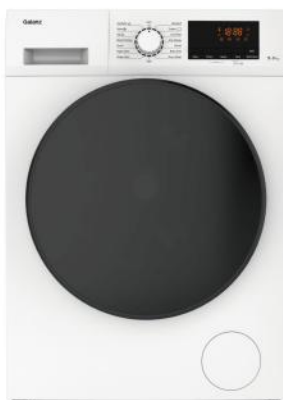
### Specifications

Capacity of Washing(kg): 9  
 Max Spin Speed: 1400  
 Programs: 15  
 Wash Noise(dBA): 60  
 Spin Noise(dBA): 76  
 Door Opening Diameter: 33cm  
 Net Weight(kg): 66  
 Gross Weight(kg): 71

### Dimensions

Unit Size(H\*W\*D): 845\*595\*545  
 Package Size(H\*W\*D): 890\*650\*570  
 20' /40' /40' HD: 72/144/215

T6



Optional Color



Capacity Range



### Features

- 15 Programs
- LED Display
- 18-Minute Fast Wash
- 1-24hr Delay Start
- Child Lock
- Power-off Memory
- Anti-foam Control
- Auto Balance System
- Overheating Control
- Water Pump

### Specifications

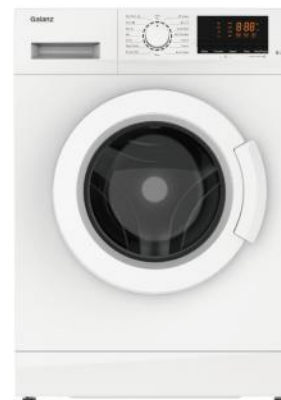
Capacity of Washing(kg): 9  
 Max Spin Speed: 1400  
 Programs: 15  
 Wash Noise(dBA): 60  
 Spin Noise(dBA): 76  
 Door Opening Diameter: 33cm  
 Net Weight(kg): 66  
 Gross Weight(kg): 71

### Dimensions

Unit Size(H\*W\*D): 845\*595\*570  
 Package Size(H\*W\*D): 890\*660\*620  
 20' /40' /40' HD: 54/114/170

## Inverter Front Loading

F8



Optional Color



Capacity Range



### Features

- 15 Programs
- LED Display
- 18-Minute Fast Wash
- 1-24hr Delay Start
- Child Lock
- Power-off Memory
- Anti-foam Control
- Auto Balance System
- Overheating Control
- Water Pump

### Specifications

Capacity of Washing(kg): 8  
 Max Spin Speed: 1400  
 Programs: 15  
 Wash Noise(dBA): 60  
 Spin Noise(dBA): 76  
 Door Opening Diameter: 30cm  
 Net Weight(kg): 65  
 Gross Weight(kg): 69

### Dimensions

Unit Size(H\*W\*D): 845\*595\*545  
 Package Size(H\*W\*D): 890\*650\*570  
 20' /40' /40' HD: 72/144/215

Q8



Optional Color



Capacity Range



### Features

- 15 Programs
- LED Display
- 18-Minute Fast Wash
- 1-24hr Delay Start
- Child Lock
- Power-off Memory
- Anti-foam Control
- Auto Balance System
- Overheating Control
- Water Pump

### Specifications

Capacity of Washing(kg): 8  
 Max Spin Speed: 1400  
 Programs: 15  
 Wash Noise(dBA): 60  
 Spin Noise(dBA): 76  
 Door Opening Diameter: 30cm  
 Net Weight(kg): 65  
 Gross Weight(kg): 69

### Dimensions

Unit Size(H\*W\*D): 845\*595\*545  
 Package Size(H\*W\*D): 890\*650\*570  
 20' /40' /40' HD: 72/144/215

## Inverter Front Loading

M2



Capacity Range

3.0kg

### Features

7 Programs  
LED Display  
25-Minute Fast Wash  
Power-off Memory  
Anti-foam Control  
Auto Balance System  
Overheating Control

### Specifications

Capacity of Washing(kg): 3  
Max Spin Speed: 700  
Programs: 7  
Wash Noise(dBA): 42  
Spin Noise(dBA): 59  
Door Opening Diameter: 29cm  
Net Weight(kg): 40  
Gross Weight(kg): 42

### Dimensions

Unit Size(H\*W\*D): 660\*500\*435  
Package Size(H\*W\*D): 730\*565\*470  
20/40/40 HD: 144/300/300

## Optional Color



## Non-inverter Front Loading



**Energy Efficiency**  
Child lock avoids children  
improperly manipulating the  
machine, and lower fuel consumption  
door side and inside



**Child Lock**  
Child lock avoids children  
improperly manipulating the  
machine, and lower fuel consumption  
door side and inside



**Intensive Wash**  
This function is perfect for very  
dirty clothes as the basic washing  
phase will be extended to ensure  
there will be no marks even after  
the lightest stain.



**Heavy**  
This function is designed to wash  
the heavy cloth, like jeans, etc.



**Mix**  
Clothing can be washed at the  
same time, even you do not need  
to and until you finish enough  
clothes of the same type to wash  
them or take your time to search  
various fabric types.



**Night Wash**  
The washing machine will not  
execute the spin program,  
which means the clothes washing  
progress very quiet.



**Anti-Vibration System**  
Superior anti-vibration device  
technology can efficiently reduce  
vibration and noise.



**Anti-Ironing**  
The spin cycle with water inside  
the drum, which means no  
mechanical damage to the fabric  
during the spin.



**Time Delay**  
Users can make a 1 to 24 hours  
time delay. It makes your house  
wash more free.



**Quick Wash**  
Using this program, users can  
wash 1.5kg laundry in less than 30  
minutes.



**Anti-Bacteria**  
This function is especially for  
preventing odors and bacteria's  
growth, protecting family's health.



**Intelligent Control  
with LODDED DEXTRA**  
Intelligent control the optimum  
water filling and spin speed  
according to the washing  
condition, save energy and less  
water.



**Power-Off Memorization**  
If the power shut off, the appliance  
can start working from where it  
stopped when the power come  
back.



**Drum Clean**  
In order to keep the drum clean,  
user can use this function to clean  
the drum.



**Extra Rinse**  
This feature is useful for people  
with sensitive skin, as each rinse  
can remove more detergent from  
the washing.



**High Spin Speed**



**Steam Wash**



**Sterilize**



## Non-inverter Front Loading

T5



Optional Color



Capacity Range



### Features

15 Programs  
LED Display  
18-Minute Fast Wash  
1-24hr Delay Start  
Child Lock  
Power-off Memory  
Anti-foam Control  
Auto Balance System  
Overheating Control  
Water Pump

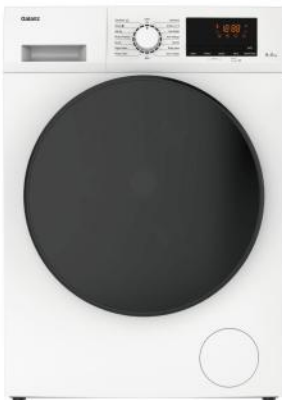
### Specifications

Capacity of Washing(kg): 8/9  
Max Spin Speed: 1200/1400  
Programs: 15  
Wash Noise(dBA): 60  
Spin Noise(dBA): 75/76  
Door Opening Diameter: 33cm  
Net Weight(kg): 66  
Gross Weight(kg): 71

### Dimensions

Unit Size(H\*W\*D): 845\*595\*545  
Package Size(H\*W\*D): 890\*650\*570  
20/40/40 HD: 72/144/215

T6



Optional Color



Capacity Range



### Features

15 Programs  
LED Display  
18-Minute Fast Wash  
1-24hr Delay Start  
Child Lock  
Power-off Memory  
Anti-foam Control  
Auto Balance System  
Overheating Control  
Water Pump

### Specifications

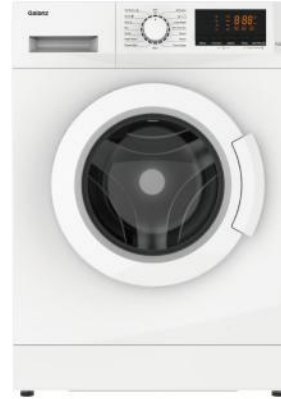
Capacity of Washing(kg): 8/9  
Max Spin Speed: 1200/1400  
Programs: 15  
Wash Noise(dBA): 60  
Spin Noise(dBA): 75/76  
Door Opening Diameter: 33cm  
Net Weight(kg): 66  
Gross Weight(kg): 71

### Dimensions

Unit Size(H\*W\*D): 845\*595\*570  
Package Size(H\*W\*D): 890\*660\*620  
20/40/40 HD: 54/114/170

## Non-inverter Front Loading

F7



Optional Color



Capacity Range



### Features

15 Programs  
LED Display  
18-Minute Fast Wash  
1-24hr Delay Start  
Child Lock  
Power-off Memory  
Anti-foam Control  
Auto Balance System  
Overheating Control  
Water Pump

### Specifications

Capacity of Washing(kg): 6/7/8  
Max Spin Speed: 1000/1200/1400  
Programs: 15  
Wash Noise(dBA): 60  
Spin Noise(dBA): 73/75/76  
Door Opening Diameter: 30cm  
Net Weight(kg): 58/59/65  
Gross Weight(kg): 62/62/69

### Dimensions

Unit Size(H\*W\*D): 845\*595\*545  
Package Size(H\*W\*D): 890\*650\*570  
20/40/40 HD: 72/144/215

Q7



Optional Color



Capacity Range



### Features

15 Programs  
LED Display  
18-Minute Fast Wash  
1-24hr Delay Start  
Child Lock  
Power-off Memory  
Anti-foam Control  
Auto Balance System  
Overheating Control  
Water Pump

### Specifications

Capacity of Washing(kg): 6/7/8  
Max Spin Speed: 1000/1200/1400  
Programs: 15  
Wash Noise(dBA): 60  
Spin Noise(dBA): 73/75/76  
Door Opening Diameter: 30cm  
Net Weight(kg): 58/59/65  
Gross Weight(kg): 62/62/69

### Dimensions

Unit Size(H\*W\*D): 845\*595\*545  
Package Size(H\*W\*D): 890\*650\*570  
20/40/40 HD: 72/144/215

## Non-inverter Front Loading

A7



Optional Color



Capacity Range



### Features

8 Programs  
18-Minute Fast Wash  
Power-off Memory  
Anti-foam Control  
Auto Balance System  
Overheating Control  
Water Pump

### Specifications

Capacity of Washing(kg): 6/7  
Max Spin Speed: 800/1000/1200  
Programs: 8  
Wash Noise(dBA): 60  
Spin Noise(dBA): 70/73/75  
Door Opening Diameter: 30cm  
Net Weight(kg): 54/58  
Gross Weight(kg): 58/62

### Dimensions

Unit Size(H\*W\*D): 845\*595\*545  
Package Size(H\*W\*D): 890\*650\*570  
20'40'/40' HD: 72/144/215

## Top Loading



**Energy Efficiency**

Energy efficiency achieves European energy standard A++.



**Child Lock**

Child lock avoids children. Improves manipulating the machine. Locks the door, detergent drawer, side and reliable.



**Intensive Wash**

This function is perfect for very dirty clothes as the basic washing process will be extended to ensure there will be no marks even after the toughest stains.



**Heavy**

This function is designed to wash the heavy stuff. Be gentle, etc.



**Mix**

Everything can be washed at the same time, when you do not need to wash with you have enough clothes of the same type to wash them or when you have to select various fabric types.



**Anti-Vibration System**

Supersoft and damping device technology can efficiently reduce vibration and noise.



**Time Delay**

Users can choose a 1 to 24 hours time delay. It makes your house work more free.



**Quick Wash**

Using this program, users can wash 1.5kg laundry in less than 30 minutes.



**Intelligent Control with ECOLEED Display**

Intelligently chooses the optimum water filling and spin speed according to the washing condition, save energy and time.



**Power-Off Memorization**

If the power shut off, the appliance can start working from where it stopped when the power come back.



**Drum Clean**

In order to keep the drum clean, users can use this function to clean the drum.



**Extra Rinse**

This feature is useful for people with sensitive skin, as extra rinse can remove foam detergent from the washing.



**High Spin Speed**





### Fuzzy Control

Choose the water level intelligently according to the amount of clothes.



### Multi Water Levels

Up to 8 options to save the water and the money.



### Touch Control

Touch control makes it easier to operate.



### Power-off Memory

Don't worry about being cut off, everything will be back by power-off memory.

## Top Loading

L5



Optional Color



Capacity Range



### Features

- 8 Programs
- LED Display
- 20-Minute Fast Wash
- 1-24hr Delay Start
- Child Lock
- Touch Panel
- Auto Balance System
- Overheating Control

### Specifications

- Capacity of Washing(kg): 8/10
- Wash Noise(dBA): 60
- Spin Noise(dBA): 68
- Net Weight(kg): 36
- Gross Weight(kg): 42

### Dimensions

- Unit Size(H\*W\*D): 972\*569\*592
- Package Size(H\*W\*D): 1030\*630\*675
- 20"/40"/40" HD: 54/114/114

## Top Loading

L3



Optional Color



Capacity Range



### Features

8 Programs  
LED Display  
20-Minute Fast Wash  
1-24hr Delay Start  
Child Lock  
Auto Balance System  
Overheating Control

### Specifications

Capacity of Washing(kg): 8/10  
Wash Noise(dBA): 60  
Spin Noise(dBA): 68  
Net Weight(kg): 35  
Gross Weight(kg): 41

### Dimensions

Unit Size(H\*W\*D): 972\*569\*592  
Package Size(H\*W\*D): 1030\*630\*675  
20"/40"/40" HD: 54/114/114

## Top Loading

G1



Optional Color



Capacity Range



### Features

LED Display  
20-Minute Fast Wash  
1-24hr Delay Start  
Child Lock  
Auto Balance System  
Overheating Control

### Specifications

Capacity of Washing(kg): 8  
Max Spin Speed: 680  
Wash Noise(dBA): 60  
Spin Noise(dBA): 68  
Net Weight(kg): 25  
Gross Weight(kg): 29

### Dimensions

Unit Size(H\*W\*D): 890\*526\*540  
Package Size(H\*W\*D): 950\*580\*595  
20"/40"/40" HD: 72/160/160

Enrich Your Life



Tumble Dryer



## Water Drop Icon Dual Control System

Precise temperature control can avoid excessive heat and cause damage to the fiber tissue of clothing.



## Water Drop Icon Embossed Drums Design

Thoughtful designed can protect clothing from bacteria.the fiber tissue of clothing.



## Water Drop Icon Dynamic Drying Design

The drum's direction of rotation can be intelligently adjustment by the aridity of clothing. So that the clothes can be dried evenly and prevent the clothes from winding together.the fiber tissue of clothing.



## Water Drop Icon Delay Start

You can choose drying times more rationally.



# Air Vented Dryer



Stainless steel drum



Delay start



Adjustable feet



Big square door  
Easy to load and unload



Interior drum light



Reverse tumble action



Filter



Two layers toughened door



Side or back installation for pipe



Expand and contract pipe



Suitable height (850mm)

## Air Vented Dryer

### T5



Optional Color



Capacity Range



### Features

130/160mins Standard Drying Time  
15 Programs  
1-24hr Delay Start  
150° Door Open Angle  
Drum Light Optional Alternate Rotation  
Anti-crease  
Buzzer  
Moisture Sensing

### Specifications

Capacity(kg): 6/7  
Door Style: Square/Round  
Energy Efficiency: Class C  
Standard Drying Time(min): 130/160  
Drum Material: Galvanized/Inox  
Inner Tub Volume(L): 101  
No. of Air-vent: 1 or 2  
Noise(dBA): 68  
Net Weight(kg): 30  
Gross Weight(kg): 33.5

### Dimensions

Unit Size(H\*W\*D): 850\*595\*550  
Package Size(H\*W\*D): 855\*655\*575  
20"/40"/40" HD: 70/144/215

### Q1



Optional Color



Capacity Range



### Features

130/160mins Standard Drying Time  
15 Programs  
1-12hr Delay Start  
150° Door Open Angle  
Drum Light Optional Alternate Rotation  
Anti-crease  
Buzzer  
Moisture Sensing

### Specifications

Capacity(kg): 6/7  
Door Style: Square/Round  
Energy Efficiency: Class C  
Standard Drying Time(min): 130/160  
Drum Material: Galvanized/Inox  
Inner Tub Volume(L): 101  
No. of Air-vent: 1 or 2  
Noise(dBA): 68  
Net Weight(kg): 30  
Gross Weight(kg): 33.5

### Dimensions

Unit Size(H\*W\*D): 850\*595\*550  
Package Size(H\*W\*D): 855\*655\*575  
20"/40"/40" HD: 70/144/215

## Air Vented Dryer

Q8



Optional Color



Capacity Range



### Features

130/160mins Standard Drying Time  
15 Programs  
3/6/12hr Delay Start  
150° Door Open Angle  
Drum Light Optional/Alternate Rotation  
Anti-crease  
Buzzer  
Moisture Sensing

### Specifications

Capacity(kg): 6/7  
Door Style: Square/Round  
Energy Efficiency: ClassC  
Standard Drying Time(mins): 130/160  
Drum Material: Galvanized/Inox  
Inner Tub Volume(L): 101  
No. of Air-vent: 1 or 2  
Noise(dBA): 68  
Net Weight(kg): 30  
Gross Weight(kg): 33.5

### Dimensions

Unit Size(H\*W\*D): 850\*595\*550  
Package Size(H\*W\*D): 855\*655\*575  
20"/40"/40" HD: 70/144/215

Q9



Optional Color



Capacity Range



### Features

130/160mins Standard Drying Time  
15 Programs  
150° Door Open Angle  
Drum Light Optional/Alternate Rotation  
Anti-crease  
Buzzer  
Moisture Sensing

### Specifications

Capacity(kg): 6/7  
Door Style: Square/Round  
Energy Efficiency: ClassC  
Standard Drying Time(mins): 130/160  
Drum Material: Galvanized/Inox  
Inner Tub Volume(L): 101  
No. of Air-vent: 1 or 2  
Noise(dBA): 68  
Net Weight(kg): 30  
Gross Weight(kg): 33.5

### Dimensions

Unit Size(H\*W\*D): 850\*595\*550  
Package Size(H\*W\*D): 855\*655\*575  
20"/40"/40" HD: 70/144/215

## Air Vented Dryer

Q5



Optional Color



Capacity Range



### Features

178mins Standard Drying Time  
15 Programs  
3/6/12hr Delay Start  
150° Door Open Angle  
Drum Light Optional/Alternate Rotation  
Anti-crease  
Moisture Sensing

### Specifications

Capacity(kg): 7  
Door Style: Square/Round  
Energy Efficiency: ClassC  
Standard Drying Time(mins): 178  
Drum Material: Galvanized/Inox  
Inner Tub Volume(L): 101  
No. of Air-vent: 1 or 2  
Noise(dBA): 68  
Net Weight(kg): 30  
Gross Weight(kg): 33.5

### Dimensions

Unit Size(H\*W\*D): 850\*595\*550  
Package Size(H\*W\*D): 855\*655\*575  
20"/40"/40" HD: 70/144/215

# Condenser Dryer



Stainless steel drum



Delay start



Adjustable feet



Big square door  
Easy to load and  
unload



Interior drum light



Reverse tumble  
action



Filter



Two layers  
toughened door



Suitable height  
(850mm)

## Condenser Dryer

S5



Optional Color



Capacity Range



### Features

150mins Standard Drying Time  
15 Programs  
1-24hr Delay Start  
150° Door Open Angle  
Drum Light Optional Alternate Rotation  
Anti-crease  
Buzzer  
Moisture Sensing

### Specifications

Capacity(kg): 8  
Door Style: Round  
Energy Efficiency: Class B  
Condenser Efficiency: C  
Standard Drying Time(mins): 150  
Drum Material: Galvanized/Inox  
Inner Tub Volume(L): 111  
Noise(dBA): 67  
Net Weight(kg): 40.5  
Gross Weight(kg): 45

### Dimensions

Unit Size(H\*W\*D): 850\*595\*630  
Package Size(H\*W\*D): 890\*660\*685  
20/40/40 HD: 54/108/162

S6



Optional Color



Capacity Range



### Features

150mins Standard Drying Time  
15 Programs  
1-24hr Delay Start  
150° Door Open Angle  
Drum Light Optional Alternate Rotation  
Anti-crease  
Buzzer  
Moisture Sensing

### Specifications

Capacity(kg): 8  
Door Style: Round  
Energy Efficiency: Class B  
Condenser Efficiency: C  
Standard Drying Time(mins): 150  
Drum Material: Galvanized/Inox  
Inner Tub Volume(L): 111  
Noise(dBA): 67  
Net Weight(kg): 40.5  
Gross Weight(kg): 45

### Dimensions

Unit Size(H\*W\*D): 850\*595\*630  
Package Size(H\*W\*D): 890\*660\*685  
20/40/40 HD: 54/108/162

## Condenser Dryer

S1



Optional Color



Capacity Range



### Features

150mins Standard Drying Time  
15 Programs  
1-24hr Delay Start  
150° Door Open Angle  
Drum Light Optional/Alternate Rotation  
Anti-crease  
Buzzer  
Moisture Sensing

### Specifications

Capacity(kg): 8  
Door Style: Square  
Energy Efficiency: Class B  
Condenser Efficiency: C  
Standard Drying Time(mins): 150  
Drum Material: Galvanized/Inox  
Inner Tub Volume(L): 111  
Noise(dBA): 67  
Net Weight(kg): 40.5  
Gross Weight(kg): 45

### Dimensions

Unit Size(H\*W\*D): 850\*595\*630  
Package Size(H\*W\*D): 890\*660\*685  
20/40/40 HD: 54/108/162

S3



Optional Color



Capacity Range



### Features

150mins Standard Drying Time  
16 Programs  
150° Door Open Angle  
Drum Light Optional/Alternate Rotation  
Anti-crease  
Buzzer  
Moisture Sensing

### Specifications

Capacity(kg): 8  
Door Style: Square  
Energy Efficiency: Class B  
Condenser Efficiency: C  
Standard Drying Time(mins): 150  
Drum Material: Galvanized/Inox  
Inner Tub Volume(L): 111  
Noise(dBA): 67  
Net Weight(kg): 40.5  
Gross Weight(kg): 45

### Dimensions

Unit Size(H\*W\*D): 850\*595\*630  
Package Size(H\*W\*D): 890\*660\*685  
20/40/40 HD: 54/108/162

## Heat Pump Dryer



Stainless steel drum



Delay start



A-adjustable feet



Big square door  
Easy to load and unload



Interior drum light



Reverse tumble action



Filter



Intelligent Control  
with LOGGED Display  
Intelligently chooses the optimum water filling and spin speed according to the washing condition, save energy and save water.



Energy Efficiency  
Energy efficiency achieves  
European energy standard  
A++



## Heat Pump Dryer

S5



Optional Color



Capacity Range



### Features

220mins Standard Drying Time  
16 Programs  
1-24hr Delay Start  
150° Door Open Angle  
Alternate Rotation  
Anti-crease  
Buzzer  
Moisture Sensing

### Specifications

Capacity(kg): 8  
Door Style: Round  
Energy Efficiency: A++  
Condenser Efficiency: B  
Standard Drying Time(mins): 220  
Drum Material: Galvanized/Inox  
Inner Tub Volume(L): 111  
Noise(dBA): 63  
Net Weight(kg): 48  
Gross Weight(kg): 51

### Dimensions

Unit Size(H\*W\*D): 850\*595\*630  
Package Size(H\*W\*D): 890\*660\*700  
20/40/40 HD: 54/108/162

S6



Optional Color



Capacity Range



### Features

220mins Standard Drying Time  
16 Programs  
1-24hr Delay Start  
150° Door Open Angle  
Alternate Rotation  
Anti-crease  
Buzzer  
Moisture Sensing

### Specifications

Capacity(kg): 8  
Door Style: Round  
Energy Efficiency: A++  
Condenser Efficiency: B  
Standard Drying Time(mins): 220  
Drum Material: Galvanized/Inox  
Inner Tub Volume(L): 111  
Noise(dBA): 63  
Net Weight(kg): 48  
Gross Weight(kg): 51

### Dimensions

Unit Size(H\*W\*D): 850\*595\*630  
Package Size(H\*W\*D): 890\*660\*700  
20/40/40 HD: 54/108/162

## Heat Pump Dryer

S1



Optional Color



Capacity Range



### Features

220mins Standard Drying Time  
16 Programs  
1-24hr Delay Start  
150° Door Open Angle  
Alternate Rotation  
Anti-crease  
Buzzer  
Moisture Sensing

### Specifications

Capacity(kg): 8  
Door Style: Square  
Energy Efficiency: A++  
Condenser Efficiency: B  
Standard Drying Time(mins): 220  
Drum Material: Galvanized/Inox  
Inner Tub Volume(L): 111  
Noise(dBA): 63  
Net Weight(kg): 48  
Gross Weight(kg): 51

### Dimensions

Unit Size(H\*W\*D): 850\*595\*630  
Package Size(H\*W\*D): 890\*660\*700  
20/40/40 HD: 54/108/162

S3



Optional Color



Capacity Range



### Features

220mins Standard Drying Time  
16 Programs  
150° Door Open Angle  
Alternate Rotation  
Anti-crease  
Buzzer  
Moisture Sensing

### Specifications

Capacity(kg): 8  
Door Style: Square  
Energy Efficiency: A++  
Condenser Efficiency: B  
Standard Drying Time(mins): 220  
Drum Material: Galvanized/Inox  
Inner Tub Volume(L): 111  
Noise(dBA): 63  
Net Weight(kg): 48  
Gross Weight(kg): 51

### Dimensions

Unit Size(H\*W\*D): 850\*595\*630  
Package Size(H\*W\*D): 890\*660\*700  
20/40/40 HD: 54/108/162